

THE MAGAZINE OF THE SOCIETY FOR PSYCHICAL RESEARCH

# Paranormal Review

www.spr.ac.uk Issue 86 Spring 2018 £5.00

**C.D. Broad**

**The Witch's Plough**

**Mysterious Paths  
of Versailles**

**SPR Conference  
Report**

**Psychical Research  
Before the SPR**

**Ghosts in the  
Machines**

**The Magic of Psi**

**Enter the 2018  
Photography  
Competition**

**DETAILS INSIDE**



### Publisher

The Society for Psychical Research  
1 Vernon Mews  
London W14 0RL  
020 7937 8984  
www.spr.ac.uk

### Editor

Leo Ruickbie  
paranormalreview@spr.ac.uk

### Proof Reader

David Ellis

### Subscriptions

*Paranormal Review* is sent free to members of the Society for Psychical Research. It is also available to non-members for a yearly subscription of £20.00, including post and packing in the UK. Contact secretary@spr.ac.uk

### Back Issues

Members have access to previous editions of the *Psi Researcher* and *Paranormal Review* via the online library. Some back issues are also available for purchase at £5.00 per copy, including post and packing within the UK (outside the UK additional postage costs apply). Contact secretary@spr.ac.uk

### Submissions

Features, articles, letters, experiences, notices, reports and reviews should be sent by email to Dr Leo Ruickbie at paranormalreview@spr.ac.uk. Material can also be posted to the Editor at 1 Vernon Mews, London W14 0RL. Please mark envelopes 'Paranormal Review'. Full submission guidelines can be found on the SPR website at www.spr.ac.uk under 'publications'.

### Note

The Editor reserves the right to edit or otherwise alter any material intended for publication. In the event of any dispute, the Editor's word is final.

### Disclaimer

The views and opinions expressed are those of the authors and do not represent those of the Editor or the Society for Psychical Research.

### Printed in Great Britain by

Premier Print, London

### The Society for Psychical Research

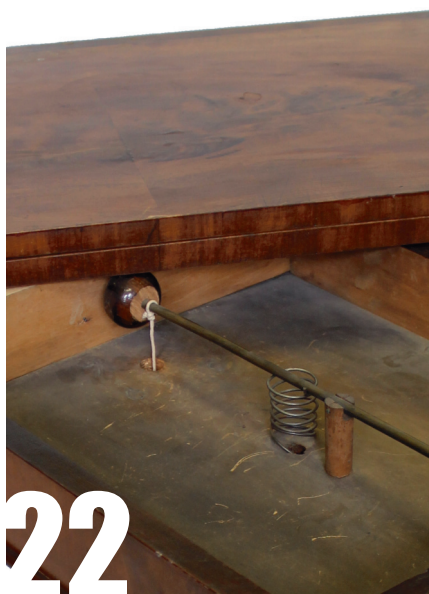
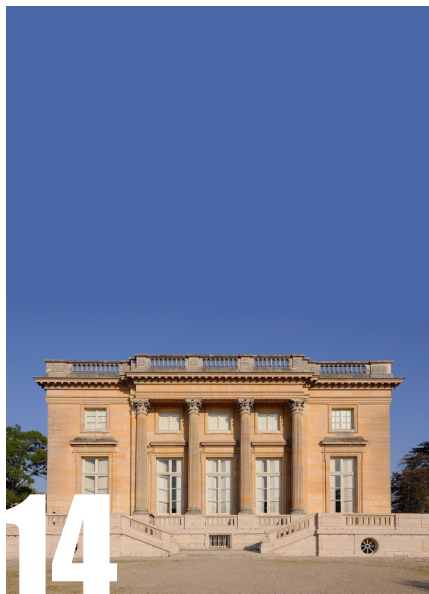
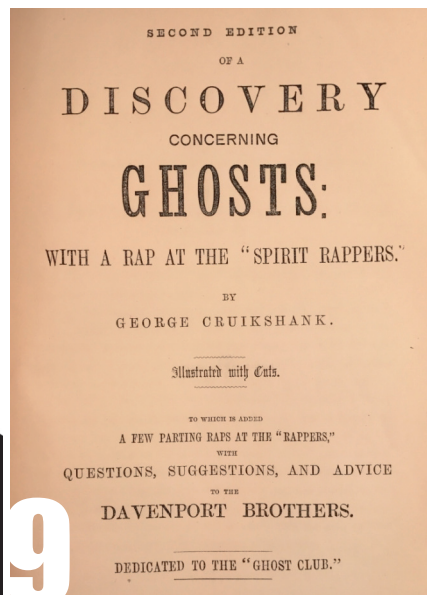
The SPR was the first organisation established to examine allegedly paranormal phenomena using scientific principles. Our aim is to learn more about events and abilities commonly described as 'psychic' or 'paranormal' by supporting research, sharing information and encouraging debate. The SPR was established in 1882 and is a Registered Charity.

### Membership

The SPR welcomes members of the public, as well as students and researchers in all disciplines, to join. Membership does not imply acceptance of any particular opinion concerning the nature or reality of the phenomena examined, and the Society holds no corporate views. The minimum age for joining is 16, with reduced subscriptions for students, couples and senior citizens. To renew or apply for membership please visit the website at www.spr.ac.uk, telephone the Secretary, Peter Johnson, on 020 7937 8984, or email secretary@spr.ac.uk.

ISSN: 1369-0426

Copyright © 2018 The Society for Psychical Research



# contents

## 4 PRESIDENT'S LETTER

The current President of the Society, Prof. John Poynton, considers the work of philosopher-president, C.D. Broad.

## 6 PSI SOCIETY

In the news: Guy Lyon Playfair, Alan Gauld and Tony Cornell, Dr Carlos Alvarado, and Steve Parsons.

## 7 PHOTOGRAPHY COMPETITION

Details of the 2018 *Paranormal Review* Photography Competition.

## 8 PERMANENT PARANORMAL OBJECT

The Museum of Witchcraft & Magic's Dr Peter Hewitt reveals the mysterious workings of the 'Witch's Plough', drawing some unsettling conclusions.

## 9 BEFORE THE BIRTH OF PSYCHICAL RESEARCH

Michael Tymn explores the pre-SPR history of psychical research, with a chronology up to 1882.

## 14 THE MYSTERIOUS PATHS OF VERSAILLES

Author Mark Lamont asks whether two English ladies strolling through the grounds of Versailles really did witness scenes from the eighteenth century.

## 17 SPONTANEOUS ACTIVITY

Meryle Secrest presents her experience of what may have been spirit communication during a dream.

## 18 JOURNEY TO THE CENTRE OF THE SPR

Dr Leo Ruickbie reports on the SPR's 40th Annual International Conference, this year held at Horsley Towers.

## 22 GHOSTS IN THE MACHINES

Resident expert Brandon Hodge investigates the history of an antique table rigged for fake spirit communication.

## 24 THE MAGIC OF PSI

Paranormal Review Events Reporter, Ashley Knibb, writes about Dr Serena Roney-Dougal's recent lecture on 'The Magic of Psi'.

## 26 CONFERENCE ANNOUNCEMENT

The SPR's 41st International Annual Conference will take place in Newcastle upon Tyne, read the call for papers.

## 26 NEW GUIDE ANNOUNCEMENT

Steve Parsons gives an overview of the whys and wherefors of the SPR's new 'Guide Notes for Investigators of Spontaneous Cases, Apparitions, Hauntings, Poltergeists and Similar Phenomena'.

## 27 CONTRIBUTORS

### 27 SPECIAL ISSUE

Articles invited for 'Guy Lyon Playfair: His Life and Work'.

## 28 EVENTS

# editorial

**W**e were all saddened recently by the news of Guy Lyon Playfair's death. The world of psychical research has surely lost one of its brighter lights. The Psi Society column this issue carries a brief obituary and it is hoped that a future issue of the magazine might be dedicated to his memory. To this end, I would like to invite articles on the subject of 'Guy Lyon Playfair: His Life and Work' and would be delighted to hear from anyone wishing to write something, whether it is an analysis of an aspect of his work or recollection of a fond memory. As an example, please see the Tanous issue (PR78).

Our regular contributors, as always, do not fail to disappoint. The Society's President, Prof. John Poynton continues his series on the SPR's philosopher-presidents. The Museum of Witchcraft & Magic's Dr Peter Hewitt contributes another piece on an item from the Museum's unique holdings. Brandon Hodge brings his expertise to bear once more on an instrument for the supposed communication with the Other World. Our Events Reporter, Ashley Knibb, has been out and about again and this time presents a report on Dr Serena

Roney-Dougal's recent lecture to the Society.

Special contributions this issue include Michael Tymn's overview and chronology of the history of psychical research before the establishment of the SPR in 1882, with assistance from Dr Carlos Alvarado. Mark Lamont joins us to re-open the Versailles time-slip case.

Last issue's Spontaneous Activity contribution has inspired another SPR member to get in touch with an account of a dream that seemed to involve communication with the departed about future events. In my line of work, I am always surprised by the number of people who have personal stories to tell of the paranormal and whole-heartedly encourage everyone reading this to get in touch with their own.

Finally, Olympus have again generously agreed to support the *Paranormal Review* Photography Competition by providing a magnificent first prize. I am sure that, like me, you are looking forward to seeing what this year's entrants send in. ♡

**Dr Leo Ruickbie**  
Editor