

THE MAGAZINE OF THE SOCIETY FOR PSYCHICAL RESEARCH

Paranormal Review

www.spr.ac.uk Issue 85 Winter 2018 £5.00

**Electronic
Spirit
Messages**

**Trauma and
Spiritual
Experience**

**Mediumistic
Xenoglossy**

**The Occult
and the
Unconscious**

**The Meaning
of Ecstasy**

Psi in Nature

**Back
to the
'Lilly' Pond**

THE EXPERIMENTAL USE OF
FLOTATION TANKS IN
PARAPSYCHOLOGY



Publisher

The Society for Psychical Research
1 Vernon Mews
London W14 0RL
020 7937 8984
www.spr.ac.uk

Editor

Leo Ruickbie
paranormalreview@spr.ac.uk

Proof Reader

David Ellis

Subscriptions

Paranormal Review is sent free to members of the Society for Psychical Research. It is also available to non-members for a yearly subscription of £20.00, including post and packing in the UK. Contact secretary@spr.ac.uk

Back Issues

Members have access to previous editions of the *Psi Researcher* and *Paranormal Review* via the online library. Some back issues are also available for purchase at £5.00 per copy, including post and packing within the UK (outside the UK additional postage costs apply). Contact secretary@spr.ac.uk

Submissions

Features, articles, letters, experiences, notices, reports and reviews should be sent by email to Dr Leo Ruickbie at paranormalreview@spr.ac.uk. Material can also be posted to the Editor at 1 Vernon Mews, London W14 0RL. Please mark envelopes 'Paranormal Review'. Full submission guidelines can be found on the SPR website at www.spr.ac.uk under 'publications'.

Note

The Editor reserves the right to edit or otherwise alter any material intended for publication. In the event of any dispute, the Editor's word is final.

Disclaimer

The views and opinions expressed are those of the authors and do not represent those of the Editor or the Society for Psychical Research.

Printed in Great Britain by

Premier Print, London

The Society for Psychical Research

The SPR was the first organisation established to examine allegedly paranormal phenomena using scientific principles. Our aim is to learn more about events and abilities commonly described as 'psychic' or 'paranormal' by supporting research, sharing information and encouraging debate. The SPR was established in 1882 and is a Registered Charity.

Membership

The SPR welcomes members of the public, as well as students and researchers in all disciplines, to join. Membership does not imply acceptance of any particular opinion concerning the nature or reality of the phenomena examined, and the Society holds no corporate views. The minimum age for joining is 16, with reduced subscriptions for students, couples and senior citizens. To renew or apply for membership please visit the website at www.spr.ac.uk, telephone the Secretary, Peter Johnson, on 020 7937 8984, or email secretary@spr.ac.uk.

ISSN: 1369-0426

Copyright © 2018 The Society for Psychical Research



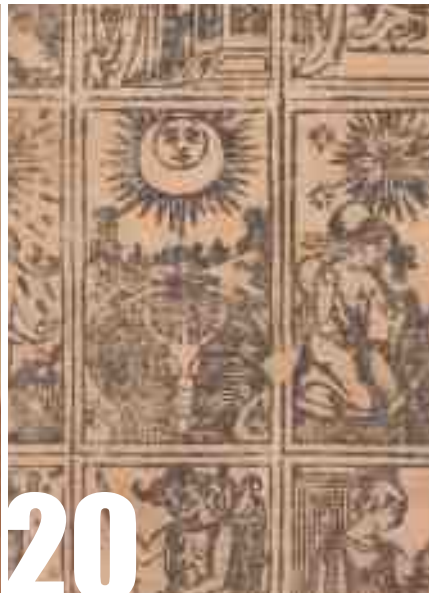
8



12



18



20



24



32

contents

4 PRESIDENT'S LETTER

The current President of the Society, Prof. John Poynton, considers the work of philosopher-president, Hans Driesch.

6 PSI SOCIETY

In the news: Prof. Chris Roe, Dr David Vernon, Dr Annekatrin Puhle, Prof. Adrian Parker-Reed, Dr Nancy Zingrone, Dr Carlos Alvarado, Robert McLuhan and Dr Callum Cooper.

7 PERMANENT PARANORMAL OBJECT

Dr Peter Hewitt exhumes another curious exhibit from the Museum of Witchcraft and Magic in Cornwall: the 'Black Egg Experiment', a supposedly magical ritual item created by the Museum's founder Cecil Williamson.

8 BACK TO THE 'LILLY' POND

Dr Callum Cooper immerses himself in the theory and practice of using flotation tanks in parapsychological research, with some interesting results.

12 ARE ELECTRONIC SPIRIT MESSAGES REAL?

Dr Sean Richards reports on The Greetings Project, a major experimental attempt in the field of EVP/ITC research to record anomalous sounds and imagery.

14 TRAUMA AND SPIRIT

A near-fatal shooting opens Raymond Spencer to what he believes are spirit contacts.

18 A RARE CASE OF MEDIUMISTIC XENOGLOSSY

Prof. Erlendur Haraldsson presents an unusual conversation between the medium Hafsteinn Björnsson and Prof. Svend Frederiksen.

20 NEC MYSTERIA QUAE NON OCCULTA EST

Filip Andjelkovic traces the role of the unconscious in occult phenomena from Myers to Freud.

24 THE MEANING OF ECSTASY

Richard Squires tells of the time he experienced an out-of-body state during a theatrical production and considers what this may tell us about the origins of theatre.

28 GHOSTS IN THE MACHINES

Brandon Hodge is once again on the trail of lost Spiritualist artefacts, this time Francis J. Lippitt's 'Psychic Stand and Detector'.

31 SPONTANEOUS ACTIVITY

Dr Leo Ruickbie begins a new occasional series to publish reports of anomalous experiences received from SPR members and members of the public.

32 PSI IN NATURE

What is the evidence for ESP and PK in zoology? Ashley Knibb reports on SPR Study Day No. 74 with Prof. John Poynton, Dr Rupert Sheldrake, Dr Callum Cooper and Dr Charmaine Sonnex.

34 LETTERS

Dr Mark J. Porrovecchio and Dr Fotini Pallikari.

35 CONTRIBUTORS

36 EVENTS

Moving Forward: Preserving the Historical Collections of Parapsychology 2018

From historical re-evaluations and current experiments, this issue of the *Paranormal Review* brings a wide range of psychical research topics to your attention. The Society's President, Prof. John Poynton, continues his philosopher-president series with a re-examination of Hans Driesch. Dr Peter Hewitt of the Museum of Witchcraft and Magic returns with another fascinating object from the Museum's collection. Brandon Hodge continues his search for missing Spiritualist devices as he scours the present for traces of the past.

The Psi Society column makes a return this issue and I have re-branded an item that has appeared before, Spontaneous Activity. Last year, I was delighted to be accepted onto the Spontaneous Cases Committee and this occasional column aims to publish some of the reports received as a matter of public record. It was one of the complaints against the Society during the First World War, for example, that it did not do enough to document

people's experiences, especially at a time when so many were reported, and this column, in its own small way, aims to redress the current turn to the laboratory. However, that attempt is entirely dependent on readers sending in their own accounts. As always, the email address is paranormalreview@spr.ac.uk. Anonymity can be requested, so please do not be shy.

I am also delighted to welcome Ashley Knibb to the magazine as our new Events Reporter. He begins with an account of the last Study Day, Psi in Nature, and I look forward to reading more about the Society's many fantastic lectures and events from him.

In the next issue, a new columnist will be joining us – you will have to wait to find out more. I will also be launching the 2018 *Paranormal Review* Photography Competition. Those of you who would like to jump the gun and send in their images (see the requirements given for 2017) are most welcome to do so. Ψ

Dr Leo Ruickbie
Editor

editorial