

Publisher

The Society for Psychical Research
1 Vernon Mews
London W14 0RL
020 7937 8984
www.spr.ac.uk

Editor

Gordon Rutter
magazine@spr.ac.uk

Proof Reader

David Ellis

Subscriptions

The Magazine of the Society for Psychical Research is sent free to members of the Society for Psychical Research. It is also available to non-members for a yearly subscription of £28.00, including post and packing in the UK. Contact secretary@spr.ac.uk

Back Issues

Members have access to previous editions of the *Psi Researcher*, *Paranormal Review* and *The Magazine of the Society for Psychical Research* via the online library. Some back issues are also available for purchase. Contact secretary@spr.ac.uk

Submissions

Features, articles, letters, experiences, notices, reports and reviews should be sent by email to Gordon Rutter at magazine@spr.ac.uk. Material can also be posted to the Editor at 1 Vernon Mews, London W14 0RL. Please mark envelopes 'The Magazine'. Full submission guidelines can be found on the SPR website at www.spr.ac.uk under 'publications'.

Note

The Editor reserves the right to edit or otherwise alter any material intended for publication. In the event of any dispute, the Editor's word is final.

Disclaimer

The views and opinions expressed are those of the authors and do not represent those of the Editor or the Society for Psychical Research.

Typeset by

New Lands Press, Edinburgh

Printed in Great Britain by

Premier Print Group, London

The Society for Psychical Research

The SPR was the first organisation established to examine allegedly paranormal phenomena using scientific principles. Our aim is to learn more about events and abilities commonly described as 'psychic' or 'paranormal' by supporting research, sharing information and encouraging debate. The SPR was established in 1882 and is a Registered Charity.

Membership

The SPR welcomes members of the public, as well as students and researchers in all disciplines, to join.

Membership does not imply acceptance of any particular opinion concerning the nature or reality of the phenomena examined, and the Society holds no corporate views. The minimum age for joining is 16, with reduced subscriptions for students, couples and senior citizens. To renew or apply for membership please visit the website at www.spr.ac.uk, telephone the Secretary, Peter Johnson, on 020 7937 8984, or email secretary@spr.ac.uk.

ISSN: 2752-5686

Copyright © 2023 The Society for Psychical Research



contents

4

Prof. Adrian Parker, SPR

PRESIDENT

On Critical Thinking and Synchronicities

7

Letters

Peter A McCue

John C Tate

8

Gordon Rutter

Danny Robins Explaining the Uncanny

17

News

18

Mike Daw

Food and the Psychic Investigator

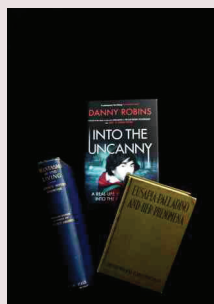
24

Trevor Harley

Parapsychology in Cambridge in the 1970s

27

Notices



Cover

A selection of books relevant to this issue.

Photograph by Gordon Rutter