

What is Needed to Advance Theories of Non-Local Consciousness

The Arcane Nexus

Assessing the Roots of Non-Local Consciousness



Dr. MICHAEL NAHM

2024

The Essay

- Cover a broad range of ancient and modern theories
- No upper limit, publishable as a “monograph”
- Non-local consciousness phenomena = psi phenomena

215 pages



Outline:

What is Needed...

1. Appreciate the nature of the world
2. Appreciate the nature of consciousness
3. Define decisive psi phenomena
4. Compare + evaluate most relevant theories of psi / NLC
5. Devise tests to decide between (features of) theories

Outline:

What is Needed...

1. Appreciate the nature of the world
2. Appreciate the nature of consciousness
3. Define decisive psi phenomena
4. Compare + evaluate most relevant theories of psi / NLC
5. Devise tests to decide between (features of) theories

What is Needed...

Misguided assumptions:

“There is a lack of theory in parapsychology!”

“The theories of parapsychologists are bad!”

“No consensus, no predictions, no replicable experiments, no reliable ‘mechanisms’ that can be invoked.”

“We need robust theories as in physics, chemistry, etc.”

Nature's Trick with the Tick



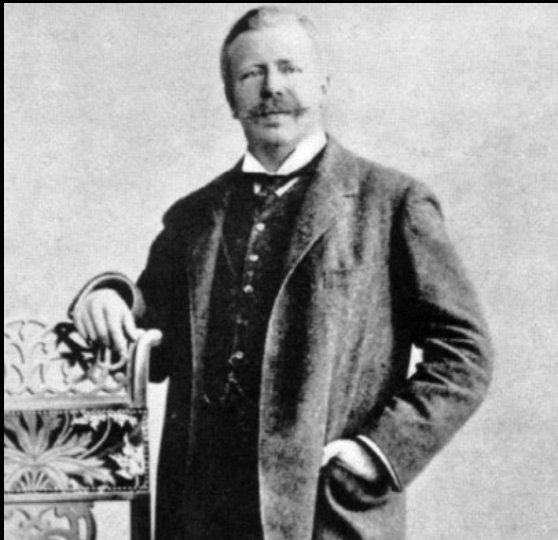
(Pixabay)

Nature's Trick with the Tick



- blind
- deaf
- no taste

- smell (butyric acid)
- touch (hairs/skin)
- warmth

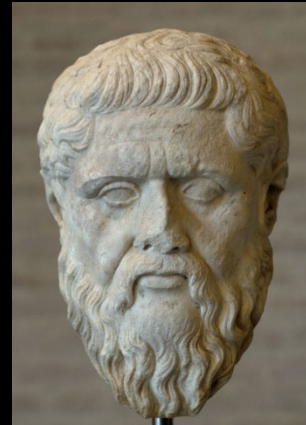


Jakob von Uexküll (1864-1944)

Perfectly adapted to needs
(live >18 years),
but reduced to what is essential
→ a quite peculiar environment!

→ “environment tunnel” / “bubble”

Nature's Trick with the Tick



Plato



Kant (Wikimedia)



Perfectly adapted to needs,
but reduced to what is essential

→ Human beings
= very complex “ticks” living
in their species-specific
environment bubble

Nature's Trick with the Tick



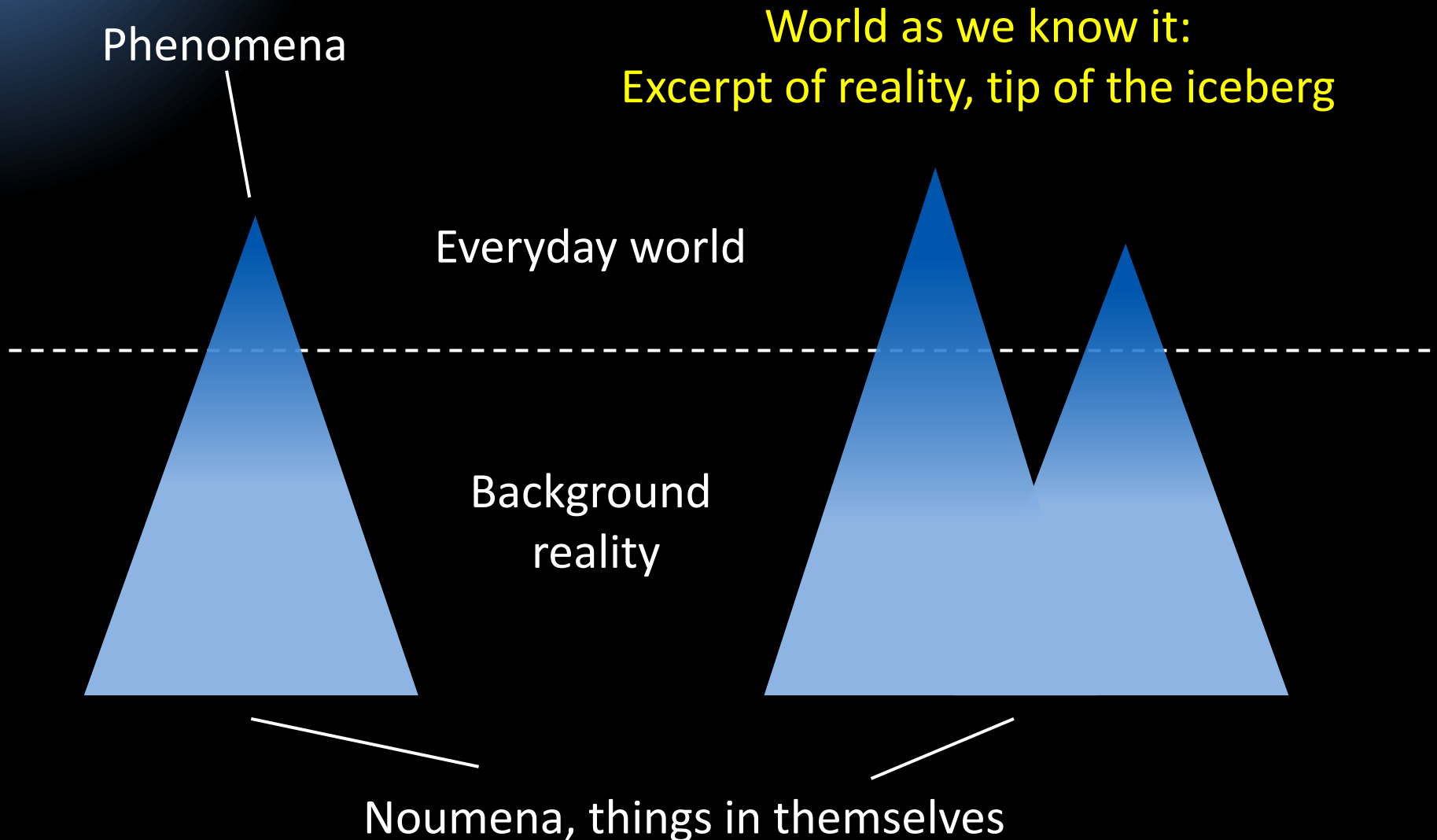
(M. Nahm)



(Partial) Blindness: Often neglected matter of course

- Time? Big Bang? Why isn't there nothing?
- **Spacetime?** Mass, movement? Theory of relativity?
- Quantum physics? Wave/particle duality?

Hidden Background Reality



What is Needed...

1. Appreciate the nature of the world
2. Appreciate the nature of consciousness
3. Define decisive psi phenomena
4. Compare + evaluate most relevant theories of psi / NLC
5. Devise tests to decide between (features of) theories

Consciousness?

We (can) only know consciousness from an **inside perspective**.
Usual opinion regarding such situations:

Biology

Organisms (plants, ticks, apes, ...) can behave successfully in their environment but can never understand and explain the larger world they are embedded in, much less how computers or satellites work. It takes a larger **outside perspective** (+ rational mind) to explain their existence in a tiny niche of the world at large.

Systems theory

Systems cannot fully describe or explain themselves and the factors influencing their boundaries.

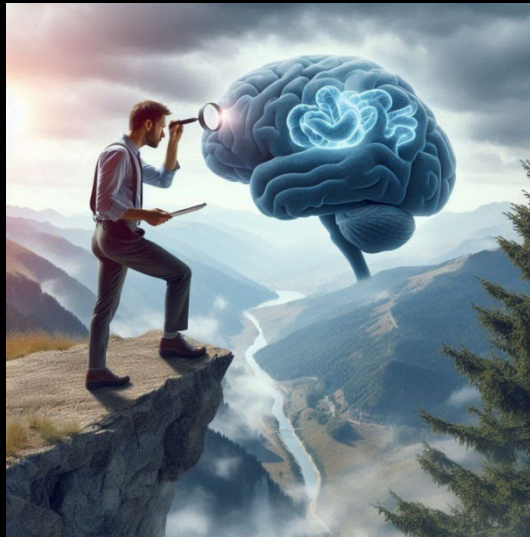
It takes an **outside perspective**.



(Wikimedia)

Consciousness?

- It would be **very unusual** if we could explain our consciousness with consciousness / rational mind (from within our self-created environment bubble, a “system”)
- So far, nobody has explained consciousness (and/or its relationship to the brain)



Consciousness?

→ Psi phenomena are *always* consciousness-related.

→

psychical research, para*psychology*, *psychokinesis*,
tele*pathy*, clair*voyance*, pre*cognition*

→ Expectation or demand to develop robust theories of
psi phenomena as in consciousness-free (classical)
physics or chemistry

= inapt “naïve realism” + anthropocentric snootiness

What is Needed...

1. Nature of the world? → **Philosophical basics**
2. Nature of consciousness (+ psi)? → **Humility, modesty**



Environment bubble

BUT:

Investigating features this bubble *IS* possible

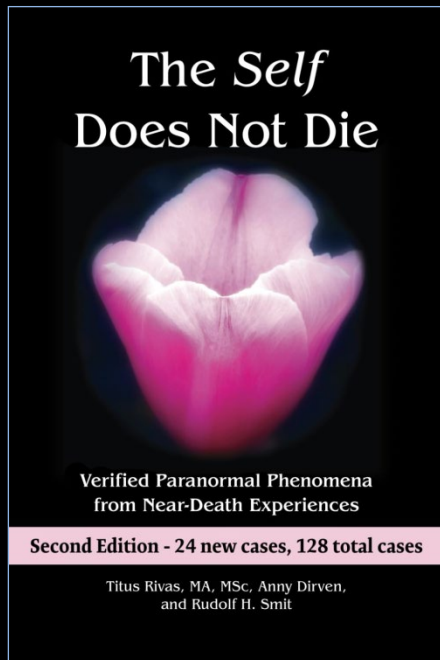
All natural science is based on
inference, approximation and probability

What is Needed...

1. Appreciate the nature of the world
2. Appreciate the nature of consciousness
3. Define decisive psi phenomena
4. Compare + evaluate most relevant theories of psi / NLC
5. Devise tests to decide between (features of) theories

Decisive Psi Phenomena

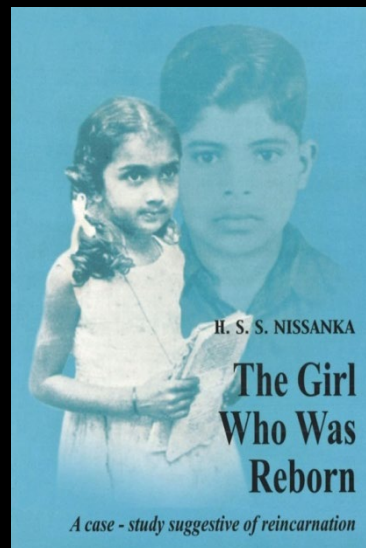
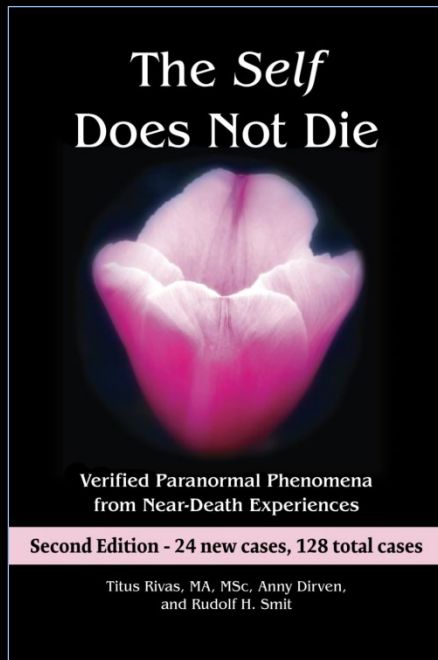
1. Near-death experiences including OBEs



Nahm M, Weibel A (2020). The significance of autoscopies as a time marker for the occurrence of near-death experiences. *Journal of Near-Death Studies*, 38, 26-50.

Decisive Psi Phenomena

1. Near-death experiences including OBEs
2. Reincarnation cases

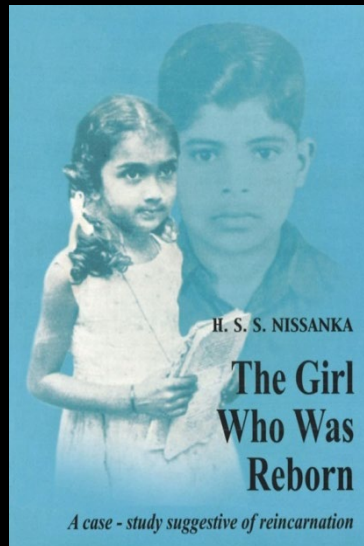
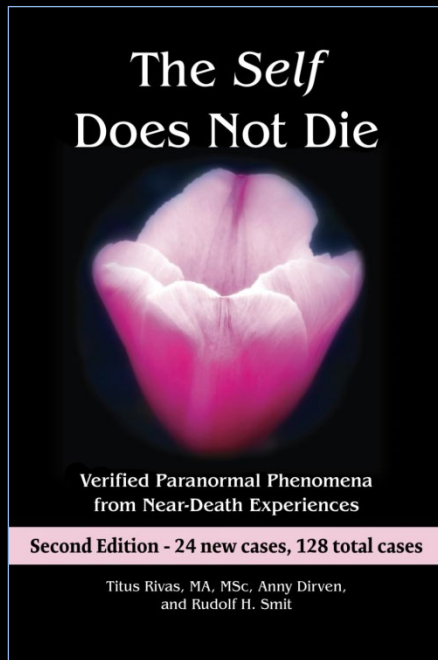


Matlock JG, Weerasekera A, Nahm M (2024). The case of Gnanathilaka Baddevithana. An early independent investigation of one of Ian Stevenson's reincarnation cases. *Journal of Scientific Exploration*, 38, 614-635.

Nahm M, Weibel A (2020). The significance of autoscopies as a time marker for the occurrence of near-death experiences. *Journal of Near-Death Studies*, 38, 26-50.

Decisive Psi Phenomena

1. Near-death experiences including OBEs
2. Reincarnation cases
3. Shared dreams (→ **IONS Essay**)

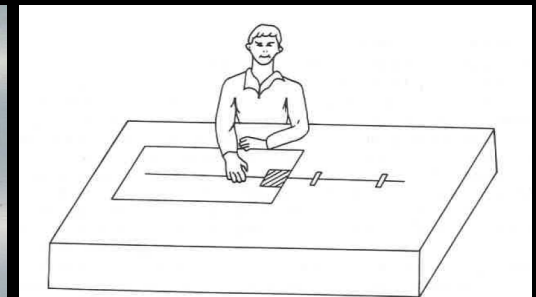
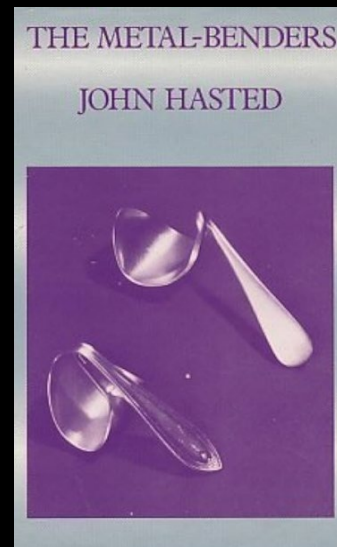
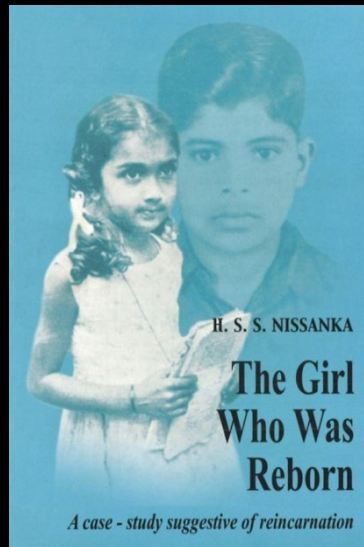
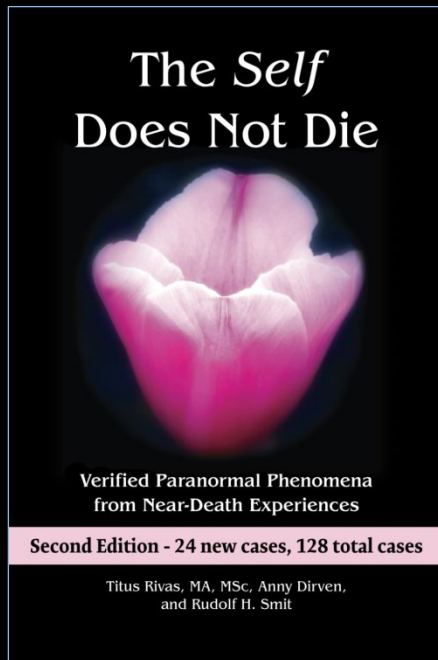


Matlock JG, Weerasekera A, Nahm M (2024). The case of Gnanathilaka Baddevithana. An early independent investigation of one of Ian Stevenson's reincarnation cases. *Journal of Scientific Exploration*, 38, 614-635.

Nahm M, Weibel A (2020). The significance of autoscopies as a time marker for the occurrence of near-death experiences. *Journal of Near-Death Studies*, 38, 26-50.

Decisive Psi Phenomena

1. Near-death experiences including OBEs
2. Reincarnation cases
3. Shared dreams (→ **IONS Essay**)
4. Macro-PK



Randall JL, Davis CP (1982). Paranormal deformation of nitinol wire: A confirmatory experiment. JSPR, 51, 368-373.

Matlock JG, Weerasekera A, Nahm M (2024). The case of Gnanathilaka Baddevithana. An early independent investigation of one of Ian Stevenson's reincarnation cases. Journal of Scientific Exploration, 38, 614-635.

Nahm M, Weibel A (2020). The significance of autoscopies as a time marker for the occurrence of near-death experiences. Journal of Near-Death Studies, 38, 26-50.

Decisive Psi Phenomena

1. Near-death experiences including OBEs
2. Reincarnation cases
3. Shared dreams (→ **IONS Essay**)
4. Macro-PK



(Wikimedia)

→ Associative, symbolic nature,
“catalytic exteriorization” of an inner
tension
(C.G. Jung: Synchronicity)

Psychosomatic reaction manifesting
in the environment

What is Needed...

1. Appreciate the nature of the world
2. Appreciate the nature of consciousness
3. Define decisive psi phenomena
4. Compare + evaluate most relevant theories of psi / NLC
5. Devise tests to decide between (features of) theories

→ There **ARE MANY** theories of psi / non-local consciousness!

→ Many can account for the four decisive psi phenomena

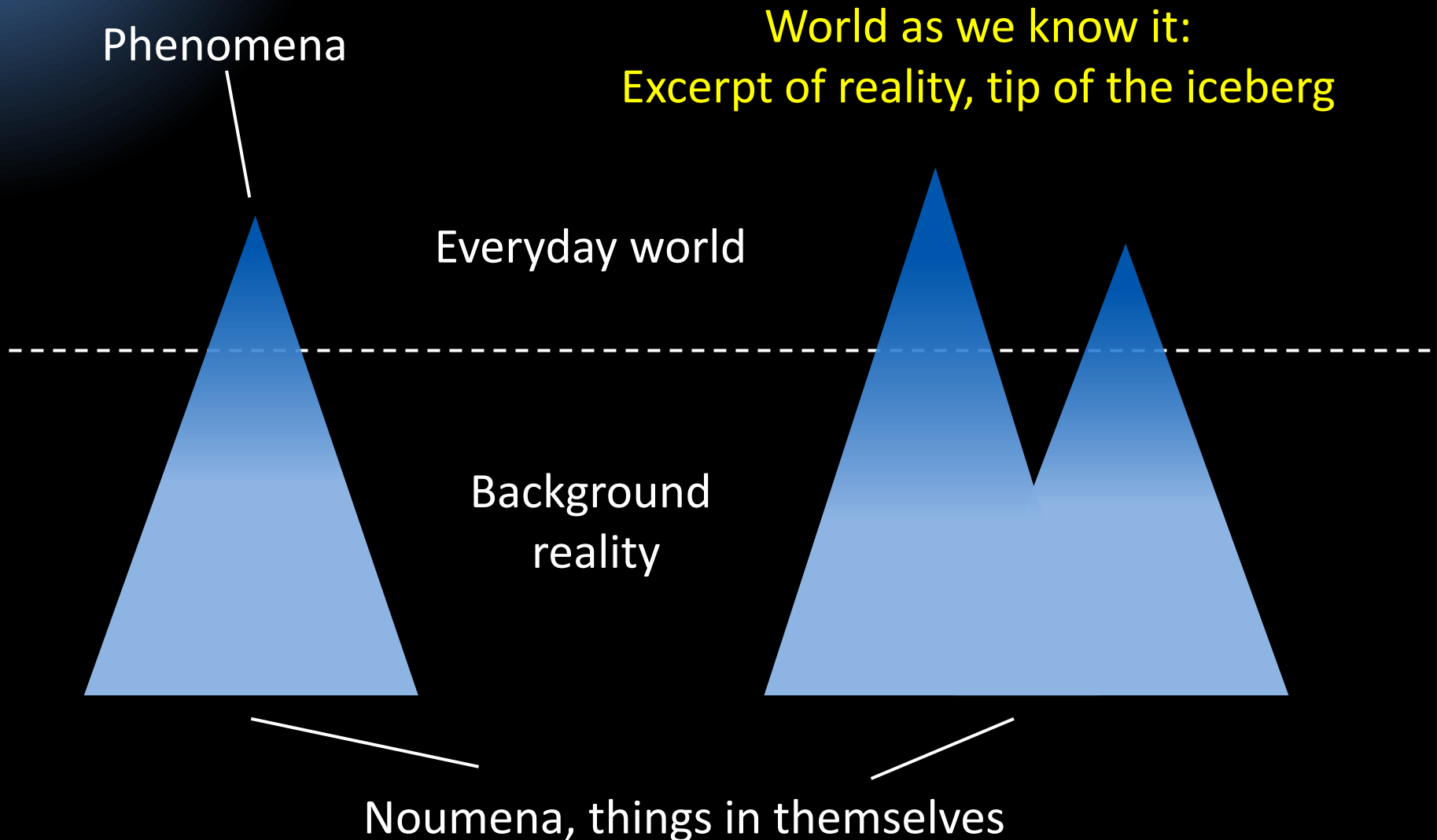
Theories of Non-Local Consciousness

- Theories from Indigenous Peoples
- Theories from Asian Esoteric Traditions
- Theories from the 19th century

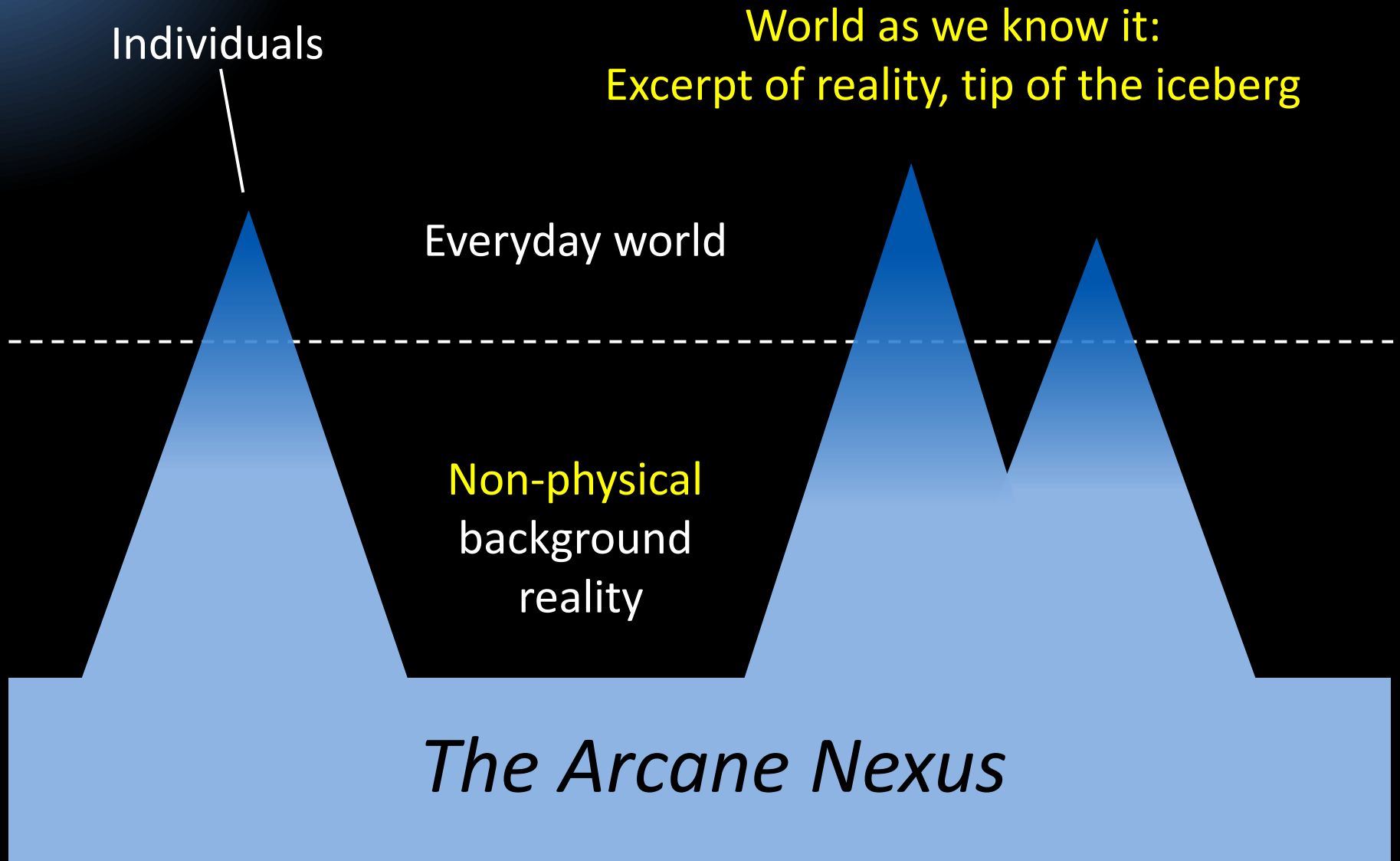
20th century onward:

- Psychological Theories
- Field Theories
- Hyperdimensional Theories
- Theories Based on Quantum Physics (**Micro**-Level)
- Theories Based on Quantum Physics (**Macro**-Level)
(synchronicity)

Prominent Common Element



Prominent Common Element



Prominent Common Element: The Arcane Nexus



Theories of Non-Local Consciousness

Compare + evaluate most relevant theories of psi / NLC

- Psychological Theories
 - Field Theories
 - Hyperdimensional Theories
 - Theories Based on Quantum Physics (Micro-Level)
 - Theories Based on Quantum Physics (Macro-Level)
-
- Common element: Often compatible
 - Relate to different contexts
 - Frame in hierarchical manner

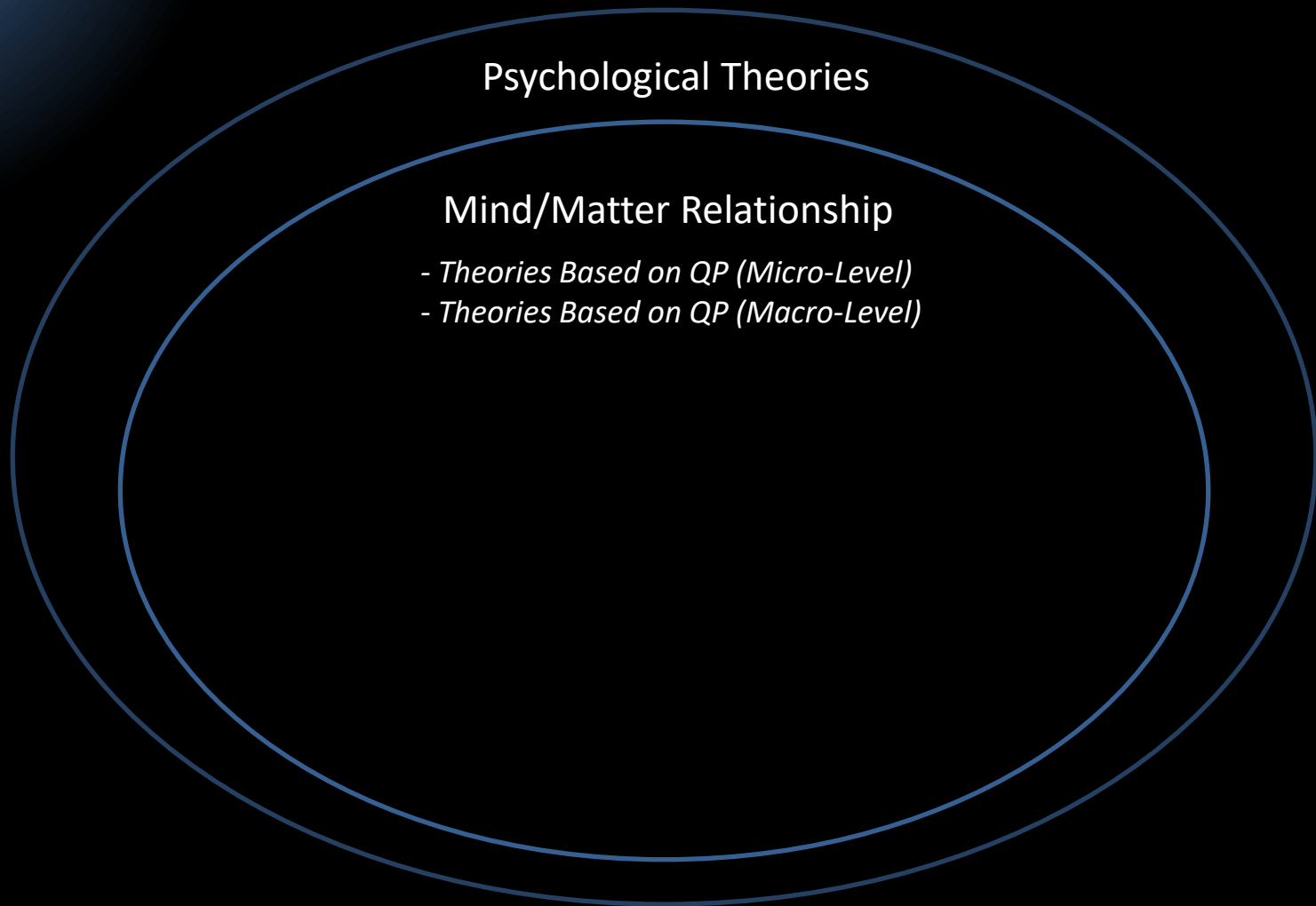
Nahm M (2022). Toward a “**Parapsychological Synthesis**”: Proposals for integrating theories of psi. *Journal of Parapsychology*, 86, 299-321

The Parapsychological Synthesis

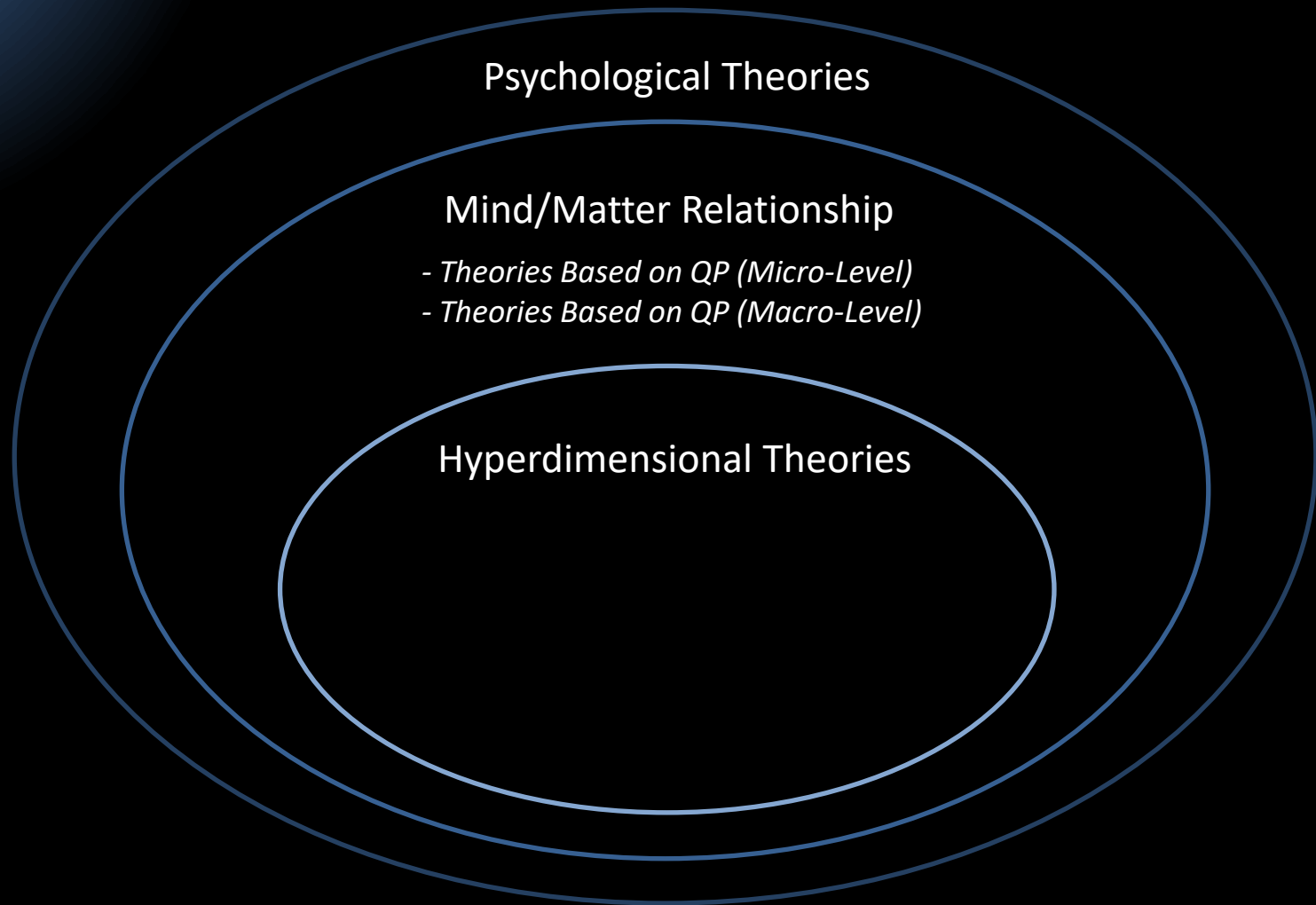
Psychological Theories



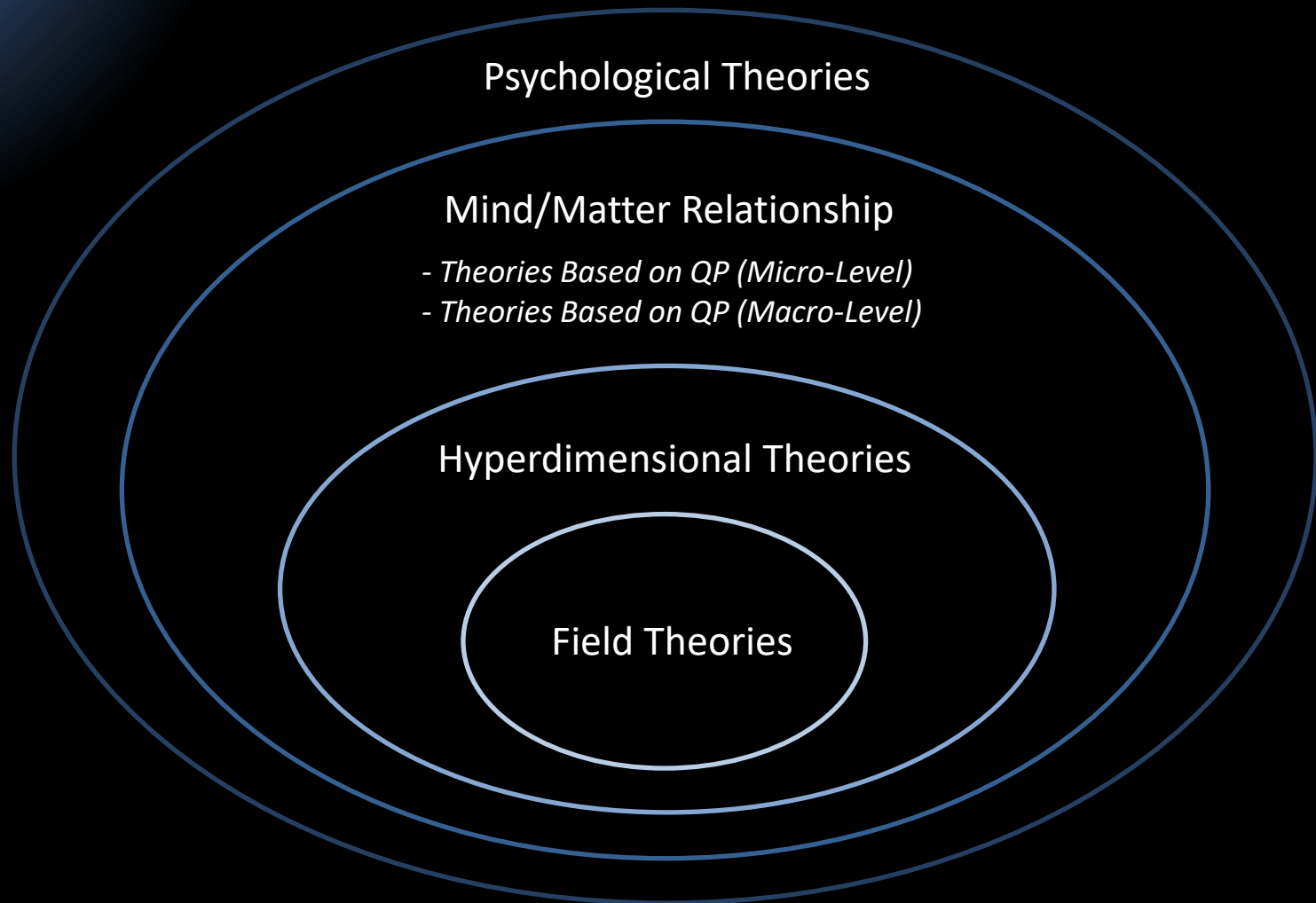
The Parapsychological Synthesis



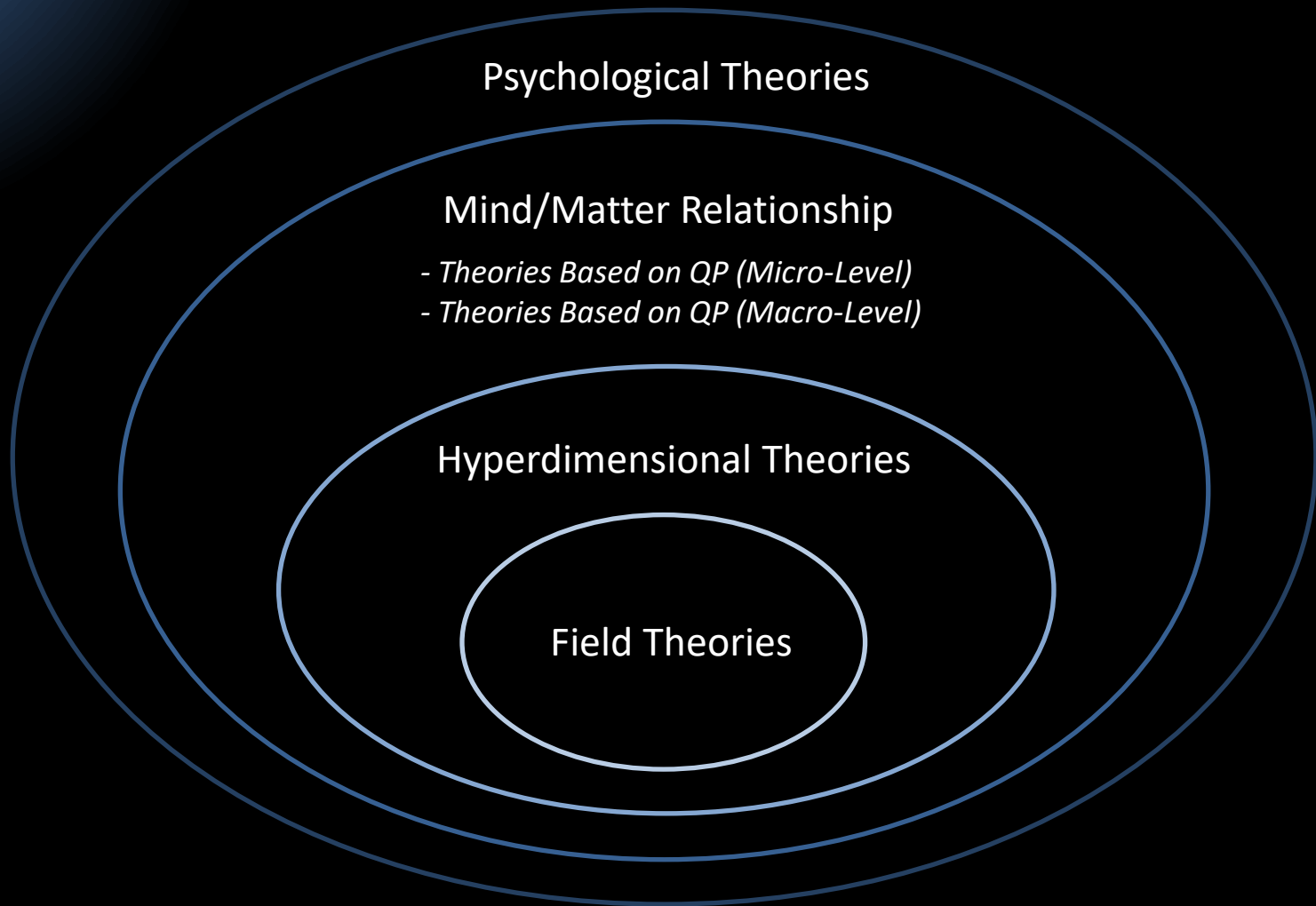
The Parapsychological Synthesis



The Parapsychological Synthesis



The Parapsychological Synthesis



Nested hierarchy according to context

What is Needed...

1. Appreciate the nature of the world
2. Appreciate the nature of consciousness
3. Define decisive psi phenomena
4. Compare + evaluate most relevant theories of psi / NLC
5. Devise tests to decide between (features of) theories

→ Not only compatibilities, but also
incompatibilities, especially regarding

Theories Based on QP (Macro-Level)
Carl Gustav Jung, synchronicity

→ “Model of Pragmatic Information”

Testing Theories of Psi

Tests to assess the
Model of Pragmatic Information



“Non-transmission axiom”:

Psi phenomena are “entanglement correlations”

- cannot be used for information/signal transfer
- psi phenomena are not (exactly) replicable

Testing Theories of Psi

Tests to assess the
Model of Pragmatic Information



- Define information (transfer) in the context of a given experiment
- Define “successful replication” of an experiment
- Define number of successful replications that would render the NT axiom falsified

Testing Theories of Psi

Tests to assess the
Model of Pragmatic Information

→ Work with gifted individuals

Bar et al. (2024): “Direct vision”

Dullin et al. (2024): Macro-PK experiments

Acunzo et al. (2024): “High performing psi participant”

Kruth (2024): Photon emission from healers

Cohen et al. (2024): Biofield therapy

Silberstein & Bigelow (2024): Brain correlations in monozygotic twins

Freedman et al. (2024): Enhancement of psi effect by “repetitive transcranial magnetic stimulation”



What is Needed...

Regardless of outcome(s):

All psi-phenomena are consciousness-related;

associative, symbolic nature of macro-PK; **meaning**

→ at odds with the modern concept of causation
(efficient causation; “billiard-ball causation”)

→ **Need added + superimposed forms of causation**

Language of life:

“Natural laws”, efficient causation = grammar

Life, consciousness, psi = content, meaning

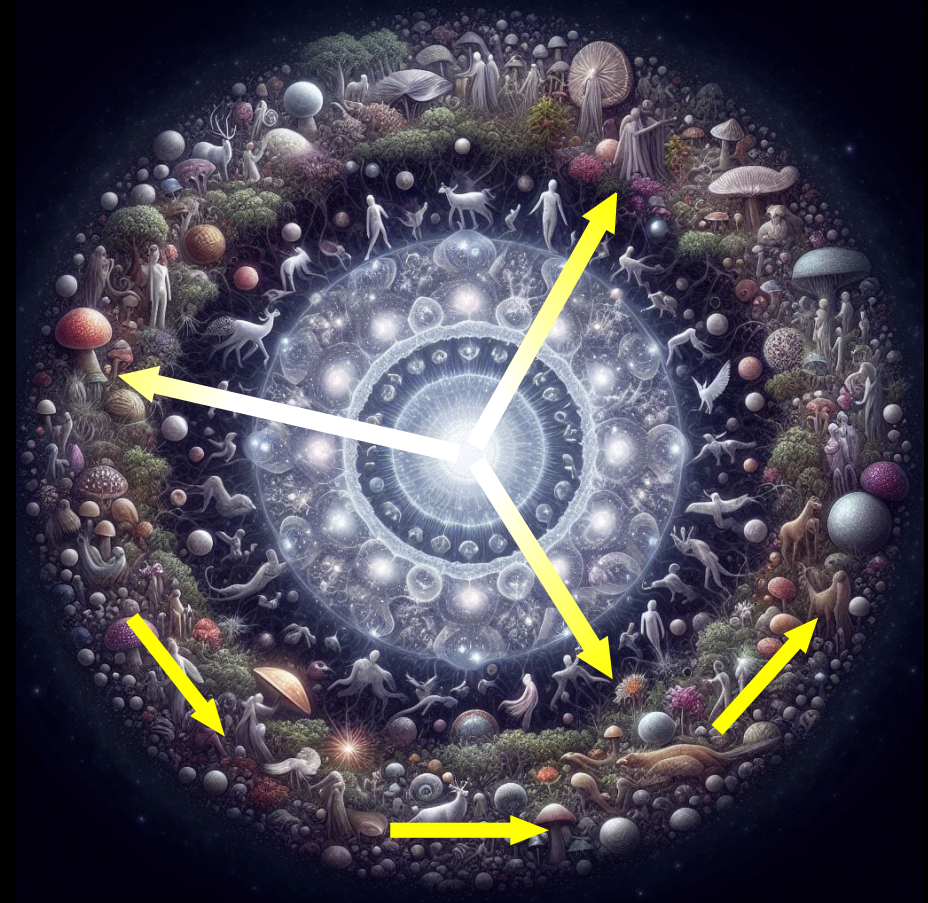
What is Needed...



O. Nahm

Added forms of causation in nature:

- formal causation
- *final causation*
(goals have causative effects)



Summing up

There ARE very useful theories of NLC / psi!

1. Nature of the world? → Philosophical basics
2. Nature of consciousness? → Humility, modesty

Summing up

There ARE very useful theories of NLC / psi!

1. Nature of the world? → Philosophical basics
2. Nature of consciousness? → Humility, modesty
3. Define decisive psi phenomena (ND-OBEs, CORT, SD, mPK)

Summing up

There ARE very useful theories of NLC / psi!

1. Nature of the world? → Philosophical basics
2. Nature of consciousness? → Humility, modesty
3. Define decisive psi phenomena (ND-OBEs, COURT, SD, mPK)
4. Compare + evaluate most relevant theories of psi / NLC
 - Accept non-physical background reality
 - Accept added forms of causation in nature
 - Develop parapsychological synthesis

Summing up

There ARE very useful theories of NLC / psi!

1. Nature of the world? → Philosophical basics
2. Nature of consciousness? → Humility, modesty
3. Define decisive psi phenomena (ND-OBEs, COURT, SD, mPK)
4. Compare + evaluate most relevant theories of psi / NLC
 - Accept non-physical background reality
 - Accept added forms of causation in nature
 - Develop parapsychological synthesis
5. Devise tests to decide between (features of) theories
 - “Information transfer” (im)possible?
 - Work with gifted individuals

Summing up

Parapsychology necessitates
its own way of theorizing.

It should lead, not follow.

(Jacques Vallée)

Thank you
very much!