

**Publisher**

The Society for Psychical Research  
1 Vernon Mews  
London W14 0RL  
020 7937 8984  
www.spr.ac.uk

**Editor**

Leo Ruickbie  
magazine@spr.ac.uk

**Proof Reader**

David Ellis

**Subscriptions**

The Magazine of the Society for Psychical Research is sent free to members of the Society for Psychical Research. It is also available to non-members for a yearly subscription of £20.00, including post and packing in the UK. Contact secretary@spr.ac.uk

**Back Issues**

Members have access to previous editions of the *Psi Researcher*, *Paranormal Review* and *The Magazine of the Society for Psychical Research* via the online library. Some back issues are also available for purchase. Contact secretary@spr.ac.uk

**Submissions**

Features, articles, letters, experiences, notices, reports and reviews should be sent by email to Dr Leo Ruickbie at [paranormalreview@spr.ac.uk](mailto:paranormalreview@spr.ac.uk). Material can also be posted to the Editor at 1 Vernon Mews, London W14 0RL. Please mark envelopes 'Paranormal Review'. Full submission guidelines can be found on the SPR website at [www.spr.ac.uk](http://www.spr.ac.uk) under 'publications'.

**Note**

The Editor reserves the right to edit or otherwise alter any material intended for publication. In the event of any dispute, the Editor's word is final.

**Disclaimer**

The views and opinions expressed are those of the authors and do not represent those of the Editor or the Society for Psychical Research.

**Typeset by**

Runestone Ltd, London

**Printed in Great Britain by**

Premier Print, London

**The Society for Psychical Research**

The SPR was the first organisation established to examine allegedly paranormal phenomena using scientific principles. Our aim is to learn more about events and abilities commonly described as 'psychic' or 'paranormal' by supporting research, sharing information and encouraging debate. The SPR was established in 1882 and is a Registered Charity.

**Membership**

The SPR welcomes members of the public, as well as students and researchers in all disciplines, to join. Membership does not imply acceptance of any particular opinion concerning the nature or reality of the phenomena examined, and the Society holds no corporate views. The minimum age for joining is 16, with reduced subscriptions for students, couples and senior citizens. To renew or apply for membership please visit the website at [www.spr.ac.uk](http://www.spr.ac.uk), telephone the Secretary, Peter Johnson, on 020 7937 8984, or email [secretary@spr.ac.uk](mailto:secretary@spr.ac.uk).

ISSN: 1369-0426

Copyright © 2021 The Society for Psychical Research



# contents

4

**Prof. Chris Roe, SPR**  
*President, Small Wonder:  
Effect Sizes in Parapsychology*

6

**Peter Hewitt,**  
*Permanent Paranormal  
Object: The Fenwick Skull*

8

**Michael Tymn,**  
*26 Reasons Why the Evidence  
is Ignored or Rejected*

12

**David Ellis,**  
*A Typewriter, a Tape Recorder  
and a Car*

16

**Annekatrin Puhle &  
Adrian Parker, Alex Munthe's  
Concept of Spirituality**

22

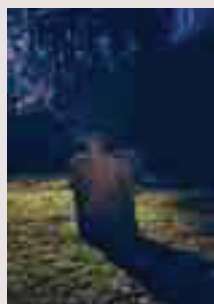
**Ashley Knibb,**  
*Event Report  
SPR Lectures Go Online*

24

**Brandon Hodge,**  
*Ghosts in the Machines:  
Two Objects, Two Worlds*

27

*Notices*  
**Call for Chapters: Is there Life  
After Death? Volume 2**



**Cover**  
*'Ghosting: Optical Artefacts in  
the Cemetery' by Leo Ruickbie*