

Publisher

The Society for Psychical Research
1 Vernon Mews
London W14 0RL
020 7937 8984
www.spr.ac.uk

Editor

Leo Ruickbie
magazine@spr.ac.uk

Proof Reader

David Ellis

Subscriptions

The Magazine of the Society for Psychical Research is sent free to members of the Society for Psychical Research. It is also available to non-members for a yearly subscription of £20.00, including post and packing in the UK. Contact secretary@spr.ac.uk

Back Issues

Members have access to previous editions of the *Psi Researcher*, *Paranormal Review* and *The Magazine of the Society for Psychical Research* via the online library. Some back issues are also available for purchase. Contact secretary@spr.ac.uk

Submissions

Features, articles, letters, experiences, notices, reports and reviews should be sent by email to Dr Leo Ruickbie at magazine@spr.ac.uk. Material can also be posted to the Editor at 1 Vernon Mews, London W14 0RL. Please mark envelopes 'MSPR'. Full submission guidelines can be found on the SPR website at www.spr.ac.uk under 'publications'.

Note

The Editor reserves the right to edit or otherwise alter any material intended for publication. In the event of any dispute, the Editor's word is final.

Disclaimer

The views and opinions expressed are those of the authors and do not represent those of the Editor or the Society for Psychical Research.

Typeset by

Runestone Ltd, London

Printed in Great Britain by

Premier Print, London

The Society for Psychical Research

The SPR was the first organisation established to examine allegedly paranormal phenomena using scientific principles. Our aim is to learn more about events and abilities commonly described as 'psychic' or 'paranormal' by supporting research, sharing information and encouraging debate. The SPR was established in 1882 and is a Registered Charity.

Membership

The SPR welcomes members of the public, as well as students and researchers in all disciplines, to join. Membership does not imply acceptance of any particular opinion concerning the nature or reality of the phenomena examined, and the Society holds no corporate views. The minimum age for joining is 16, with reduced subscriptions for students, couples and senior citizens. To renew or apply for membership please visit the website at www.spr.ac.uk, telephone the Secretary, Peter Johnson, on 020 7937 8984, or email secretary@spr.ac.uk.

ISSN: 2752-5686

Copyright © 2021 The Society for Psychical Research



contents

4

Robert Bigelow

*The \$1,500,000 Question
Is There Proof of an Afterlife?*

8

Jan Pilotti

*Does the Future Exist?
Space-Time and Scepticism*

12

Leo Ruickbie

*A Report on the SPR Study
Day 'Making Space for Psi'*

18

Stanley Krippner

*Anomalies in Brasilia:
Investigating Amyr Amiden*

20

John Tate

*Haunted Houses and Animal
Mutilation: Paranomics, Pt 2*

24

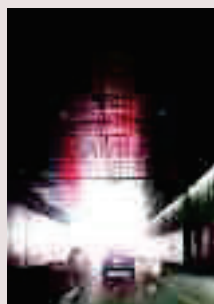
Events Report

*Ashley Knibb Reports on Study
Day 79 and Recent Lectures*

26

Brandon Hodge

*Ghosts in the Machines:
Automatic Writing for the Masses*



Cover

*'Light at the End: Paris Road
Tunnel' by Leo Ruickbie*