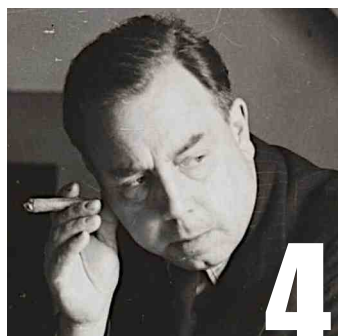


PR96 contents



CHRIS ROE
President of the SPR, Prof. Chris Roe, asks 'What Have We Learned from Case Collections?', focusing on his work with the Alister Hardy and J.B. Priestley (pictured) archives.

4



DONALD WEST
Prof. John Poynton, Prof. Adrian Parker and David Ellis pay tribute to the late Prof. Donald West, former President and Vice-President of the SPR.

6

MARY ROSE BARRINGTON
Prof. John Poynton, Crystal Ashley and Betty Markwick share memories of long-serving SPR member Mary Rose Barrington.

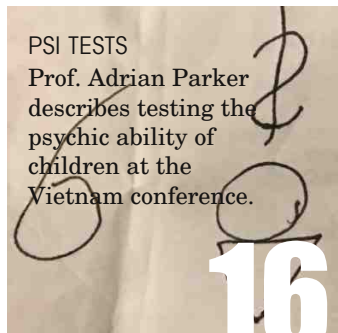


8

VIETNAM
In 'Dragons Greeting Clouds', Dr Leo Ruickbie reports on the International Life Science and Parapsychology Studies Association Conference in Ha Long, Vietnam, with comments by Prof. Bernard Carr and Dr Annekatrin Puhle.



10



PSI TESTS
Prof. Adrian Parker describes testing the psychic ability of children at the Vietnam conference.

16

PSI IN CHINA
An inside view into academic parapsychology, amateur research and psychic training companies in the People's Republic of China.

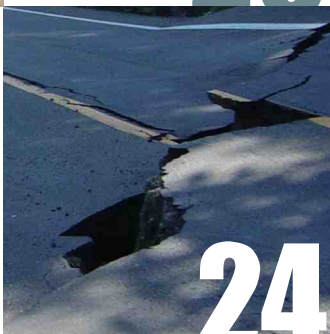
20



PSI POTENTIAL
Chinese researchers Prof. Yi-Fang Chang and colleagues ask whether blind and normal-sighted children can be trained to use psi.

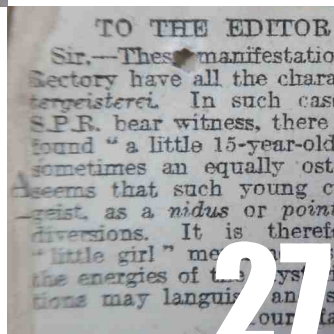
22

SENSING EARTHQUAKES
Dr Julie Svay investigates claims of being able to predict earthquakes using other-than-normal means.



24

LETTERS
Dr Sheila Joshi continues the discussion on the future of the Society for Psychical Research. Dr Tom Ruffles comments on Simon Bacon's article on 'Technology and Ghost Hunting in Film'.



27

COVER: photograph by Leo Ruickbie, showing images of Prof. Bernard Carr, Dr Leo Ruickbie and others on a 'shadow wall' taken in Ha Long, Vietnam, superimposed on a Vietnamese flag found during the photographer's visit to the country in December 2019.

ParanormalReview

Publisher

The Society for Psychical Research 1 Vernon Mews London W14 0RL
Telephone 020 7937 8984 www.spr.ac.uk

Editor

Leo Ruickbie paranormalreview@spr.ac.uk

Proof Reader
David Ellis

Subscriptions

Paranormal Review is a benefit of membership of the Society for Psychical Research. It is also available to non-members for a yearly subscription of £20.00. Contact secretary@spr.ac.uk

Back Issues

Members have access to previous editions via the online library. Some back issues are also available for purchase: contact secretary@spr.ac.uk

Submissions

All submissions should be sent by email to Dr Leo Ruickbie at paranormalreview@spr.ac.uk. Material can also be posted to the Editor at 1 Vernon Mews, London W14 0RL. Please mark envelopes 'Paranormal Review'. Guidelines can be found on the SPR website at www.spr.ac.uk under 'publications'.

Note

The Editor reserves the right to edit or

otherwise alter any material intended for publication. In the event of any dispute, the Editor's word is final.

Disclaimer

The views and opinions expressed are those of the authors and do not represent those of the Editor or the Society for Psychical Research.

Printed in Great Britain by
Premier Print, London

ISSN: 1369-0426

Copyright © 2020 The Society for Psychical Research

